

## COVERAGE

As guide, 1 x 15Kg bag will cover approximately 14.25m<sup>2</sup> of 450 x 450mm flags, for joints of 6mm x 25mm.

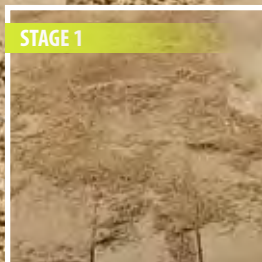
See technical data sheet for full product specification and coverage rates.

Typical cure rate: within 6-12 hours @ 20°C and 24-48 hours @ 10°C. Compressive strength after 28 days: 17N/mm<sup>2</sup>.

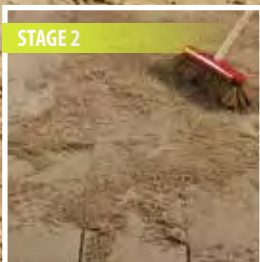
## CODES

BDJC15	15Kg	Buff
BDJC15GR	12Kg	Grey
BDJC10ANT	10Kg	Anthracite

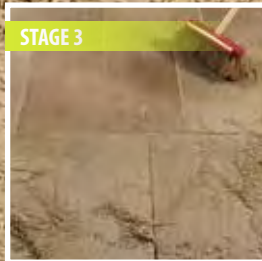
STAGE 1



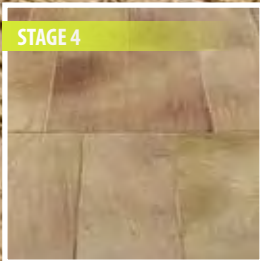
STAGE 2



STAGE 3



STAGE 4



# THE REVOLUTIONARY ALTERNATIVE TO SAND/CEMENT POINTING!

BOND IT  
UNIT G16, RIVER BANK WAY,  
LOWFIELDS BUSINESS PARK, ELLAND  
WEST YORKSHIRE, HX5 9DN.

TEL: 01422 315300

FAX: 01422 315310

EMAIL: [sales@bond-it.co.uk](mailto:sales@bond-it.co.uk)

PART OF THE DRIVE ALIVE RANGE OF  
PRODUCTS FROM BOND IT.

[www.bond-it.co.uk](http://www.bond-it.co.uk) | [www.yourdrivealive.co.uk](http://www.yourdrivealive.co.uk)



bond it

# WIDE GAP JOINT-FILL ALL WEATHER PAVING COMPOUND



# THE REVOLUTIONARY ALTERNATIVE TO SAND/CEMENT POINTING!

MADE IN BRITAIN BY BOND IT

THE PROFESSIONALS CHOICE



## WHAT IS JOINT-FILL?

A unique blend of polymers and aggregates that bind together chemically in the presence of the atmosphere to form a stable solid mass. An easy to use system for the simple and rapid pointing of paved areas with joints over 5mm. Compatible with most types of paving including natural stone, terracotta, clay, concrete and cobble stones.

- Single component joint filling material
- Simple application – just sweep into joints
- Available in buff, grey and anthracite colours
- Suitable for interior and exterior use
- Ideal for patios, pathways, piazzas, shopping centres, car parks and service areas

## WHY USE JOINT-FILL?

- Cost effective
- 10 times faster than conventional sand and cement mortar
- Easy application – DIY friendly
- Allows paving to be re-used (cable re-laying, etc)
- Safe to use
- Allows rainwater and oxygen to permeate soil and plants
- Does not pollute soil or ground water
- Does not wash out or blow out of joints
- Improved safety in pedestrian areas
- Prevents weed growth in joints
- Unaffected by weather conditions



# WIDE GAP JOINT-FILL ALL WEATHER PAVING COMPOUND



**THE**  
**REVOLUTIONARY**  
**ALTERNATIVE TO SAND/CEMENT POINTING!**

## WHO CAN USE JOINT-FILL?

- LOCAL AUTHORITIES
- LANDSCAPING AND DRIVE WAY COMPANIES
- DOMESTIC USE FOR HOMES AND GARDENS
- MAINTENANCE AND UTILITIES CONTRACTORS

## WATCH POINTS

- Wide Gap Joint-Fill is not suitable for use with paving that has V-shaped joints. Wide Gap Joint-Fill does not adhere to the paving and will gradually work loose in a V-shaped joint resulting in a broken joint line.
- Wide Gap Joint-Fill is designed to remain permeable once cured. This allows rainwater to enter the watercourse and reduce puddling. The use of patio sealers over the top of the Wide Gap Joint-Fill will reduce this permeability.
- If using a sealer, it is best to apply this to the paving and allow it to dry fully before applying Wide Gap Joint-Fill. Never use a patio sealer on wet Wide Gap Joint-Fill, nor use Wide Gap Joint-Fill on a wet patio sealer.
- Wide Gap Joint-Fill is not suitable for applications involving permanent water immersion but it will withstand typical wet-dry weather conditions.
- To avoid standing water, particularly where the paved area has been built on a solid non-porous base, the area must be well drained by the inclusion of a drainage slope.
- Do not allow the Wide Gap Joint-Fill to stand in water until fully cured. Heavy rain after the compound has been applied, particularly over a solid non porous base, may retard the cure. In this situation and if heavy rain is imminent, we would recommend the area is covered to avoid the saturation of the joints.
- Efflorescence is an inherent characteristic of concrete paving, particularly riven and reconstituted stone. It is not promoted by the use of Wide Gap Joint-Fill.
- In periods of heavy rainfall, deposits of dirt may collect on the Wide Gap Joint-Fill joints. These can easily be removed by brushing when dry or using a hose pipe when wet.
- Wide Gap Joint-Fill can be used internally but the distinctive odour may be a problem.
- Wide Gap Joint-Fill cures by reaction with the air – once opened it will start the curing process so use immediately. To prolong life expectancy keep sealed at all times.

**THE PROFESSIONALS CHOICE**